

537000

5443000

5443000

Trailhead Access - 2WD Accessible

- **Driving North** out of Creston, **reset your trip odometer** to **0.0 km** at the Highway 3/3A junction.
- **Proceed** on Highway 3A for **4.0 km**, **turning East** onto Lakeview-Arrow Creek Road.
- At **6.3 km turn South** onto Foster Road. Pavement ends at the base of Goat Mountain FSR (**6.9 km**).
- **Bear right** at two junctions along the way (**7.6 km** and **10.2 km**) **arriving at the trailhead** at **13 km**.
- A pullout at the trailhead offers space for two vehicles, thanks in advance for parking off the road and out of the way.

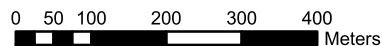


**CRESTON
COMMUNITY FOREST**
Creston Valley Forest Corporation

LADYSLIPPER TRAIL MAP



1:10,000



KOOTENAY MAP MASTERS LTD.
Creston, BC
Tel: (250) 428-0602 – Fax: (250) 428-0652
kmm@kootenay.com

5442000

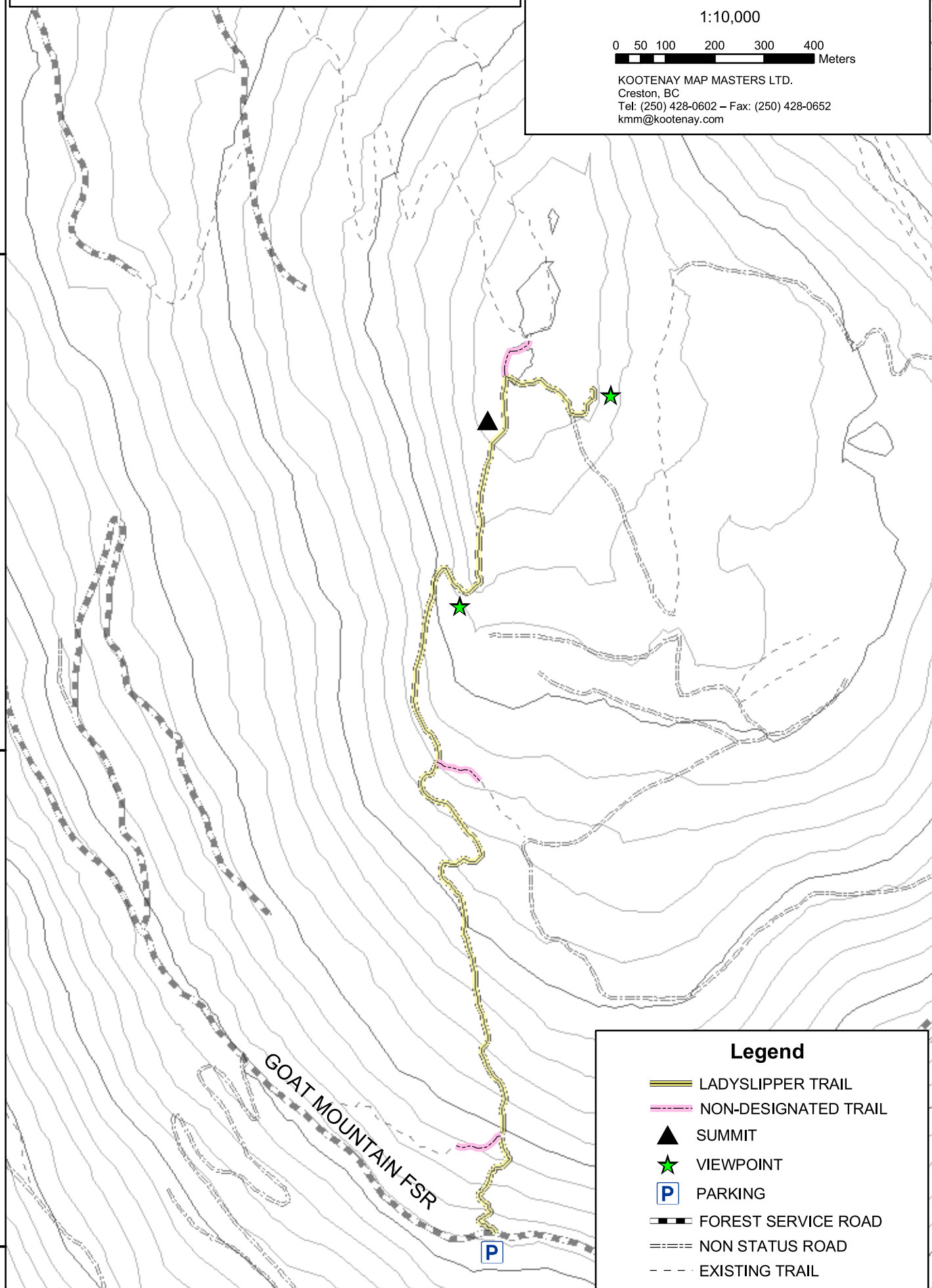
5442000

5441000

5441000

5440000

5440000



Legend

- LADYSLIPPER TRAIL
- NON-DESIGNATED TRAIL
- ▲ SUMMIT
- ★ VIEWPOINT
- P PARKING
- - - FOREST SERVICE ROAD
- - - NON STATUS ROAD
- - - EXISTING TRAIL

537000

538000